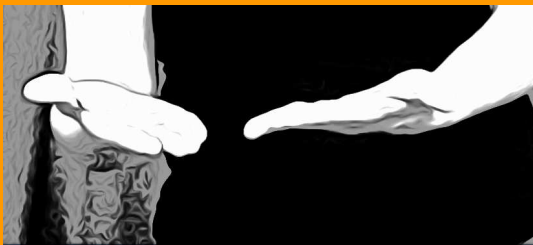




Goals Language policies for signing deaf Europeans require **reliable reference grammars** of their sign languages (SLs), which are generally lacking or of limited validity if they exist. They constitute the **basis for teaching and training purposes**. In addition, descriptive grammars are essential for the **documentation of a European linguistic and cultural heritage** which is largely unrecognized to date. Making SL grammars available to signing communities, policy makers, linguists and to civil society in general will **strengthen the status of SLs and support full participation of their users in society**. In parallel, deepening the knowledge on SL grammars with a theoretically informed comparative approach will contribute to the **characterization of the human faculty of language**, which is severely biased towards spoken languages.



COST participants

Austria
Denmark
France
Germany
Greece
Iceland
Italy
The Netherlands
Norway
Poland
Spain
Turkey
United Kingdom

Non-COST participants

Argentina
Australia

Working groups

WG1: Phonology, Morphology and Lexicon

Coord.: Roland Pfau

WG2: Syntax

Coord.: Caterina Donati

WG3: Semantics and Pragmatics

Coord.: Markus Steinbach

WG4: Methodology and grammar design

Coord.: Carlo Geraci

Duration 2011-2015



The **SignGram** blueprint will have two main components:

- **Table of Contents:** detailed checklist of linguistic features that the grammar developer needs to go through in order to get a comprehensive view of the grammar of the language under study.
- **Manual:** guidelines and background information that accompany the Table of Contents and provide the necessary information about how to implement



The Action also aims to deliver an open online **repository of elicitation materials** that will support the SignGram Blueprint.



Chair
Josep Quer

Vicechair
Carlo Cecchetto

Grant Holder
Universitat Pompeu Fabra
(Barcelona)

Grant Holder Administrator
Gemma Barberà

Website
www.signgram.eu



COST Domain Committee
Rapporteur
Jacques DUBUCS

COST Science Officer
Luule MIZERA

COST Administrative Officer
Jeannette NCHUNG

SignGram

COST Action IS 1006

A blueprint for sign language grammars



Unraveling the grammars of European sign languages: pathways to full citizenship of deaf signers and to the protection of their linguistic heritage